

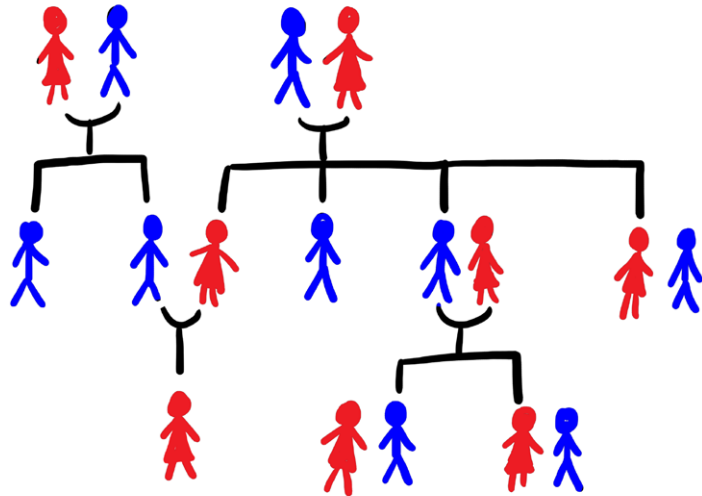
# ETGAR Weekly Challenge

Shabbat Parshat Vayeira

17<sup>th</sup> Cheshvan 5783 – 11<sup>th</sup> November 2022

## Good Relations / Bad Relations

1. What relation was *Yitzchak* to *Yishmael*?
2. What relation was *Esav* to *Yosef*?
3. *Lot* was *Avraham*'s nephew, what was his relation to *Yitzchak*?



## Parshah Discussion

וַיִּקְרָא אַבְרָהָם אֶת-שְׁם-בְנוֹ הַנוֹלָד-לוֹ,  
אִשָּׁר-יָלְדָה-לוֹ שָׂרָה--יִצְחָק.

“And *Avraham* named his son that was born to him, who *Sarah* gave birth to; *Yitzchak*.” (*Bereishit* 21:3)

- In this week's *sidrah* we read about *Yitzchak*'s birth. In what ways was it unusual?
- What does the name *Yitzchak* mean and how does it relate to the story?
- How did God test *Avraham* in this week's *sidrah*?
- In what ways have you been tested?

## Brainteaser

Identify the word or phrase:

GEMESSRS

No. 4

ETGAR  
2023

To subscribe to the Etgar Weekly Challenge please go to [www.etgar.co.uk](http://www.etgar.co.uk)

Answer to Brainteaser No. 3:  
Covenant

LSJS  
London School  
of Jewish Studies

THE  
JC  
THE JEWISH CHRONICLE